

Which one is false?



- A It is a cube
- B It has 5 faces
- C It's faces are squares

Which one is false?



- A Triangle at both ends
- B It is a prism
- C It has 7 verticies

Which one is false?



- A It has no verticies
- B It has a circle base
- C One flat face, and one curved face

Which one is false?



- A It has no verticies
- B It is a cylinder
- C It has 4 faces

Which one is false?



- A It has 4 verticies
- B It is a prism
- C It has 4 faces

Which one is false?



- A It has a square base
- B It is a pyramid
- C It has 7 edges

Which one is false?



- A It is a cube
- B It has 5 faces
- C It's faces are squares

Which one is false?



- A Triangle at both ends
- B It is a prism
- C It has 7 verticies



Which one is false?



- A It has no vertices
- B It has a circle base
- C One flat face, and one curved face

Which one is false?



- A It has no verticies
- B It is a cylinder
- C It has 4 faces

Which one is false?



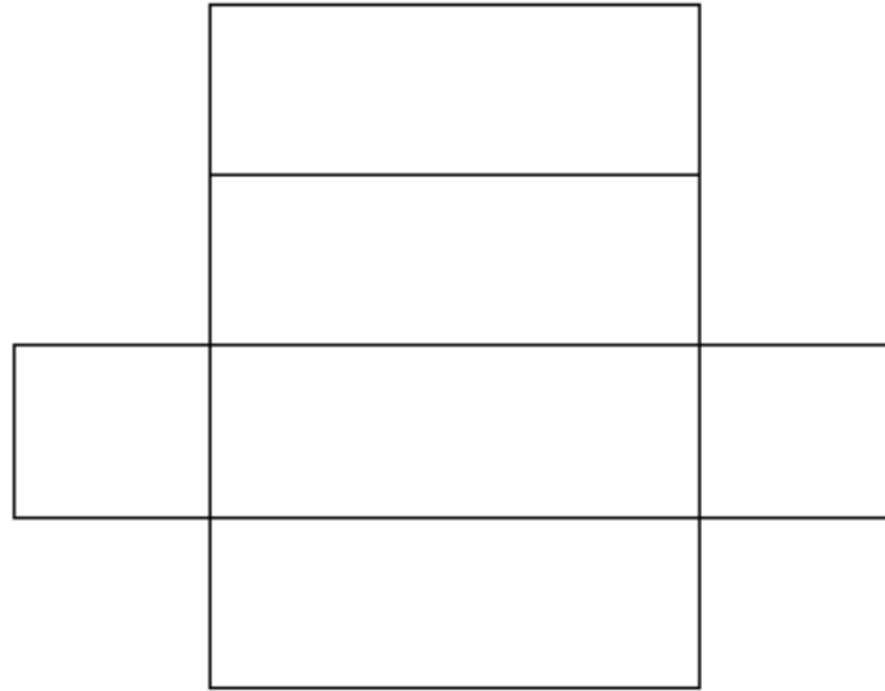
- A It has 4 verticies
- B It is a prism
- C It has 4 faces

Which one is false?



- A It has a square base
- B It is a pyramid
- C It has 7 edges

Which one is false?



- A This is a net
- B It will make a cube
- C It is also a prism